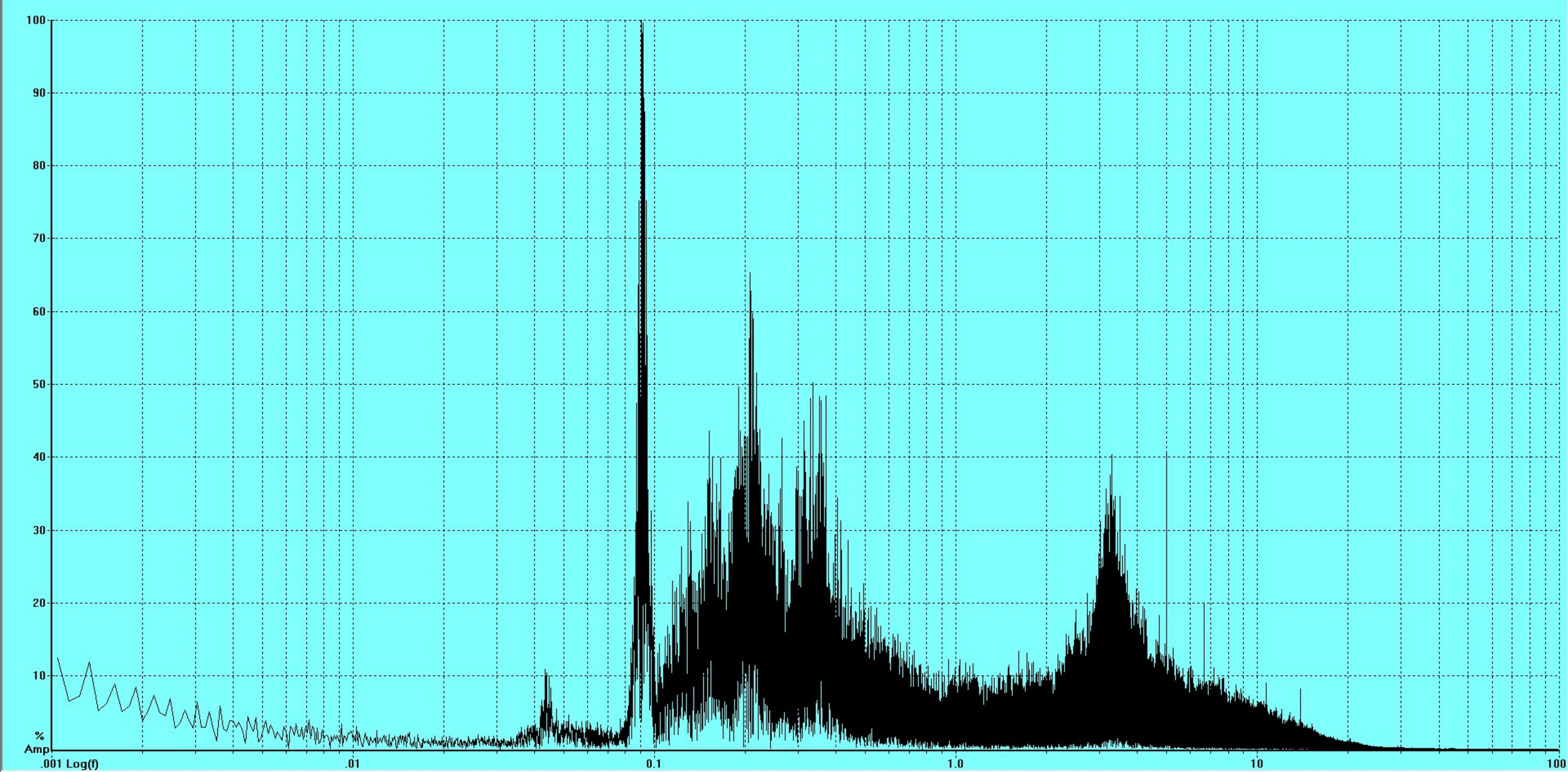
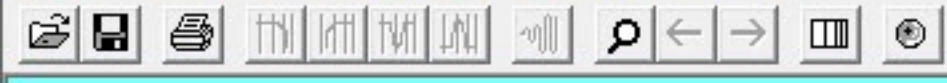


Start Date: 08/30/11 UTC Channel: BHZ-PH BHZ Palos Verdes, California INYO FBV



## High Surf Advisory

COASTAL HAZARD MESSAGE  
NATIONAL WEATHER SERVICE LOS ANGELES/OXNARD CA  
534 AM PDT WED AUG 31 2011

...A HIGH SURF ADVISORY REMAINS IN EFFECT FROM 5 PM THIS AFTERNOON TO 5 PM FRIDAY FOR THE SOUTHWEST FACING BEACHES OF LOS ANGELES AND VENTURA COUNTIES AND THE SOUTHWEST FACING SHORES OF CATALINA ISLAND...

.A LONG PERIOD SOUTHWEST SWELL THAT ORIGINATED OFF THE COAST OF NEW ZEALAND IN A VERY POWERFUL STORM HAS CROSSED MOST OF THE PACIFIC OCEAN ON ITS WAY TO THE BEACHES AND SHORELINE OF SOUTHWEST CALIFORNIA. THE LARGE SWELL WILL HAVE A PERIOD OF AROUND 20 SECONDS WHEN IT ARRIVES ON THE COAST SOMETIME TONIGHT PRODUCING BREAKERS OF 7 TO 9 FEET WITH MAX SETS TO 11 FEET.

CAZ040-041-087-312200-  
/O.CON.KLOX.SU.Y.0015.110901T0000Z-110903T0000Z/  
VENTURA COUNTY COAST-  
LOS ANGELES COUNTY COAST INCLUDING DOWNTOWN LOS ANGELES-  
CATALINA ISLAND-  
534 AM PDT WED AUG 31 2011

...HIGH SURF ADVISORY REMAINS IN EFFECT FROM 5 PM THIS AFTERNOON TO 5 PM PDT FRIDAY...

\* SURF...BREAKERS OF 7 TO 9 FEET WILL BE POSSIBLE DURING THE PEAK OF THE EVENT ON THURSDAY...WITH MAX SETS POSSIBLE TO 11 FEET IN FAVORED SOUTHWEST FACING BEACHES. SOME LOCATIONS EXPECTED TO BE AFFECTED INCLUDE BUT ARE NOT LIMITED TO ZUMA BEACH AND SOME OF THE BEACHES FROM SANTA MONICA DOWN TO REDONDO BEACH.